

Key Features

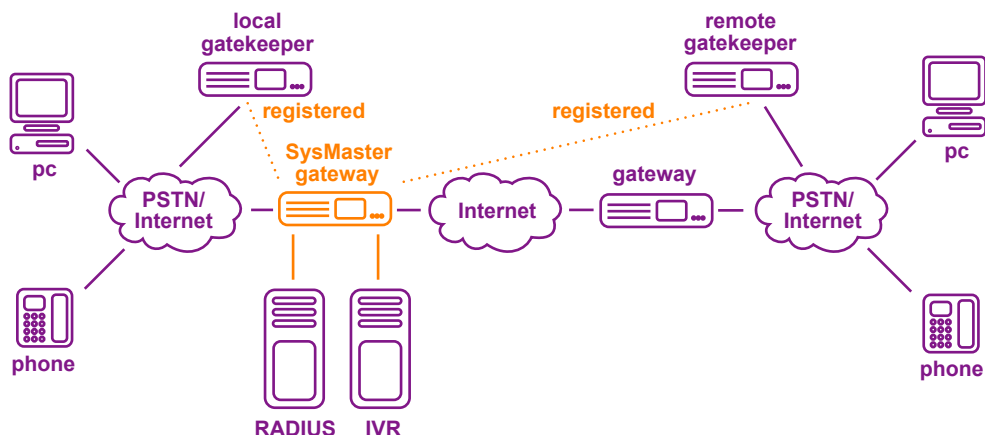
- H.323 and SIP protocols support
- Up to 480 PSTN/SS7
- Up to 1920 VoIP channels
- Registration in Unlimited Gatekeepers
- Two IP channels in one call that can be used for VoIP proxy services
- G723.1, G729A/B/AB, G726, GSM codecs capable of operating concurrently
- Unlimited IVR profiles including ANI, PIN, PIN/ANI, pass-through authentication mechanisms
- Unlimited dialing plans/routing tables to allow custom routing based on GW IP address/subnet or channel type.
- Provides time based routing and LCR support.
- Provides fail-over of remote routes based on L3, L4, L7 remote service checks
- Full RADIUS/VSA support for complex Radius billing/CDR interfaces
- Allows custom voice prompts and custom languages
- Allows Call-Back services based on two IP leg solution
- PC-to-Phone support with IVR support for VoIP clients for ANY codec
- Call Drops, Call Forwarding, and Advanced Number Processing support
- Built-in Customer Service Number, Credit Time, and Credit Balance support
- Intuitive, user-friendly GUI interface
- Extremely Attractive Price with unlimited upgrade options
- Full Compatibility with Cisco, Lucent, Quintum, IP phones, Soft phones
- Unlimited language servers

The Problem

A new generation VoIP telecom provider is looking for a gateway solution that will allow dynamic routing of VoIP calls in IP-to-IP mode (VoIP proxy mode). The Gateway should provide support for two IP legs in one call as well as register with multiple remote gatekeepers. PC-to-Phone support with full IVR capabilities is also required. Dynamic IVR switching with custom routing tables/routing plans is desired to allow managed services for resellers and time based call routing.

The Solution

SysMaster VoIP Gateway offers universal solution that allows dynamic call management in real time. All calls are routed via the available PSTN or VoIP channels based on custom routes for individual resellers. The gateway allows proxy services so that origination and termination partners are securely separated. The gateway also supports all Pc-to-Phone customers with custom IVR prompts. Multiple Gatekeeper registrations are supported to several large termination providers for problem-free call management.



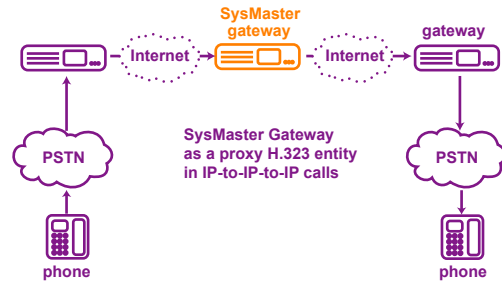
SOLUTION FEATURES

Complete IP Based Solution

SM 7000 Gateway is the complete IP based solution for the enterprise. The system provides automatic and intelligent management of Internet traffic and connect offering unmatched reliability, manageability and performance.

In addition, SM 7000 provides a two-IP-leg support for Proxy Services, support for IP-to-IP-to-IP services in proxy mode or callback server mode. The unique implementation offers flexibility for inbound calls to come via IP and go out via IP or PSTN based on the selected dialing plan/routing table. This gateway solution supports up to 1920 one-way VoIP channels or 480 PSTN/SS7 channels.

SM 7000 Gateway comes in three flavors or level designed to satisfy even the most demanding needs of large businesses. Available solution offerings are:

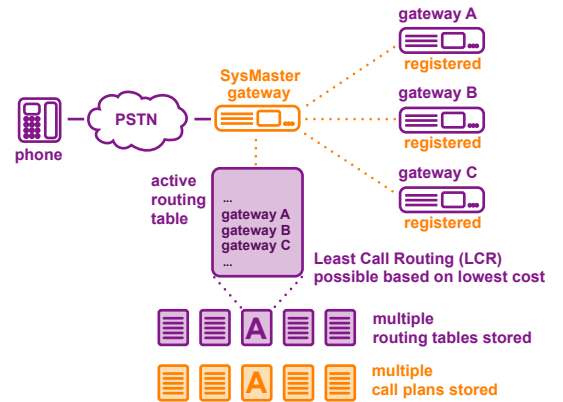


SysMaster VoIP Gateway

	CPU/DB	Max VoIP Channels	Max PSTN / SS7 Channels
Level 1	Pentium® 4 Processor	up to 240	up to 120
Level 2	Dual XEON	up to 960	up to 480
Level 3	Quad XEON	up to 1920	up to 480

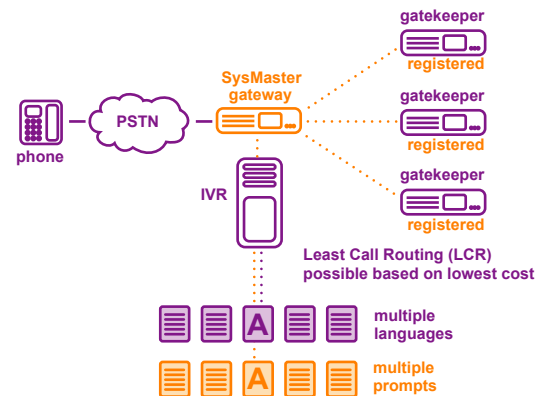
Unlimited Dial Plans / Routing Tables Support

The SysMaster Gateway supports unlimited number of inbound and outbound dialing plans as well as full scripting language for number translation. Dialing Plans can be bind to PSTN lines, inbound Network IP Addresses/Network Segments, or inbound end points. Dial Plans can be time based to allow Time-based and Least Cost Routing support. Provide complete fault-tolerance to disable destinations that fail the defined L3, L4, L7 health checks.



Unlimited Gatekeeper Registration Support

The SysMaster Gateway will register with unlimited number of remote, third-party gatekeepers to allow flawless call routing. This unique feature allows easy integration with all major terminating provider services. Gatekeepers can be easily specified for all inbound and outbound routing purposes.



RADIUS/VSA Support for Complex Billing Environments

The SysMaster Gateway fully supports RADIUS/VSA parameters for complex RADIUS based billing environments. Provides support for credit-time, credit-amount IVR announcements, as well as custom Welcome and Call Termination announcements. In addition, it will support custom languages, custom prompts and custom call termination times to allow full flexibility of service implementation. Supports RADIUS Server and Language Server groups for fault-tolerance.

SOLUTION FEATURES

Unique Integrated Solution with Attractive Price Tag

SysMaster Gateway is the only gateway solution that allows easy configuration and management of complex VoIP routing infrastructures. The Gateway is fully compatible with Cisco, Lucent and other third-party providers' equipment as well as IP phones, and soft phones. The Gateway will allow any combination of inbound and outbound PSTN and VoIP calls with dynamic codec switching and codec negotiation. Currently supports the most popular G723.1 and G729.ab codecs.

CONTACT INFO

SysMaster Corporation
370 N. Wiget Lane, Suite 100
Walnut Creek, CA 94598
United States of America

email: info@sysmaster.com
Toll free: 1-877-900-3993
web site: <http://www.sysmaster.com>