

uniSwitch

Softswitch

KEY FEATURES

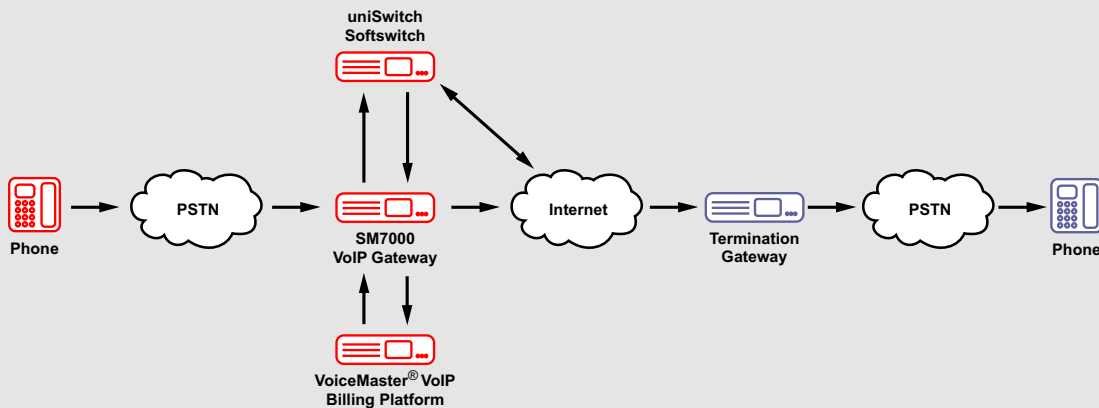
- Multiple Routing Mechanisms
- Topology Hiding
- SIP/H.323 Protocol Conversion
- Proxy Mode Support
- Routed Mode Support
- Routed Mode w/o H.245 Support
- Static Mode Support
- High Scalability
- ASR Route Switching
- Route Fail-over Support
- Universal Connectivity

Product Overview

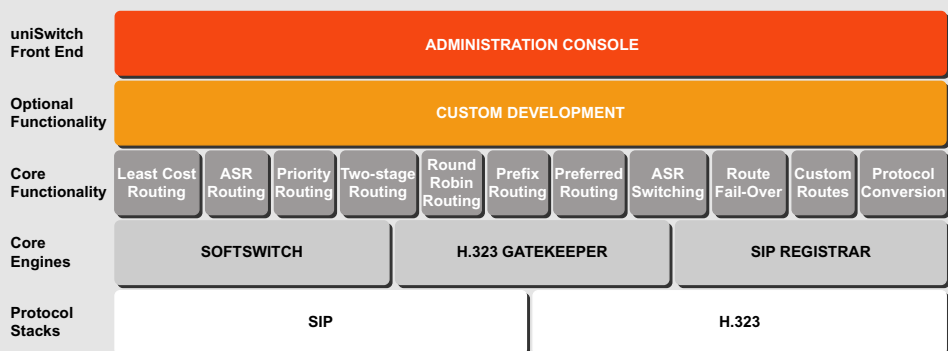
uniSwitch is a VoIP Softswitch that offers flexible routing between VoIP networks, carrier grade reliability and high scalability. The product supports multiple routing methods, including Least Cost Routing, ASR Routing, and Priority Routing which enables providers to select the most profitable and high quality routes for each call, and increase call completion rates, revenues and profits. With the uniSwitch Softswitch, service providers benefit from improved call completion rates, higher revenues, less revenue leakage, and improved network security and availability.

UNISWITCH SOFTSWITCH

NETWORK DIAGRAM WITH UNISWITCH



UNISWITCH PRODUCT ARCHITECTURE



uniSwitch

Softswitch

Multiple Routing Mechanisms

uniSwitch Softswitch supports multiple routing mechanisms, including Least Cost Routing, ASR Routing, Priority Routing, Two-stage Routing, Preferred routing, Route Fail-Over and others. By providing multiple routing options, uniSwitch enables providers to select the most profitable and high quality routes for each call and increase call completion rates, revenues and profits.

Topology Hiding

Using uniSwitch Softswitch, providers can securely separate their VoIP networks from the outside IP world. The product can act as a traffic proxy between out-of-network VoIP terminals and in-network equipment thereby preventing outsiders from seeing the true topology of the protected network.

SIP/H.323 Protocol Conversion

The protocol conversion functionality of uniSwitch Softswitch ensures maximum interoperability with third party VoIP equipment. The softswitch can translate signaling messages from SIP to H.323 and vice versa and thus bridge calls between VoIP equipment using otherwise incompatible protocols.

Proxy Mode Support

uniSwitch Softswitch can operate in proxy mode in which both signaling (RAS) and voice (RTP) traffic flow through the softswitch. Such bandwidth intensive mode is suitable for establishing connections to terminals behind NAT and to terminals that want to keep their identities private. In proxy mode, uniSwitch exercises full call control and can disconnect calls in progress if necessary.

Routed Mode Support

In routed mode, uniSwitch Softswitch requires less bandwidth. In such mode the softswitch performs direct control of signaling (RAS) messages only; voice (RTP) traffic is exchanged gateway-to-gateway. In routed mode, uniSwitch exercised substantial degree of call control and can disconnect calls in progress if necessary.

Routed Mode w/o H.245 Support

This operating mode of uniSwitch Softswitch mimics Routed Mode with the difference that H.245 call signaling is handled by the participating gateways, not the softswitch. Routed Mode w/o H.245 enables uniSwitch to reduce further bandwidth utilization while still preserving substantial degree of call control.

Static Mode Support

In static mode, both signaling (RAS) and voice (RTP) traffic are exchanged directly between participating gateways. In such mode uniSwitch Softswitch consumes least bandwidth but does not have control over calls in progress.

High Scalability

uniSwitch Softswitch is offered in standard and carrier editions to address the capacity needs of both emerging and established telecoms and service providers. Depending on the business model and infrastructure in which uniSwitch is utilized, the standard edition can support up to 500 concurrent calls, whereas the carrier edition can handle up to 1,000 concurrent calls.

ASR Route Switching

uniSwitch Softswitch offers ASR route switching capabilities to ensure higher call completion rates and reduced revenue loss. The product monitors all end terminals in real-time and automatically disconnects those, whose ASR rates fall below critical values preset by system administrators.

Route Fail-over Support

uniSwitch Softswitch offers a mechanism to ensure high network availability. The product can be configured to periodically conduct L3, L4, and L7 remote service checks and re-route (fail-over) calls to alternative remote terminals if existing ones become unavailable.

Universal Connectivity

uniSwitch Softswitch offers a number of features to ensure universal connectivity with other VoIP terminals. In particular, the product can accept traffic from both registered and non-registered terminals and can terminate traffic to gatekeepers, gateways and softswitches.



SysMaster Corporation
370 N. Wiget Lane, Suite 100
Walnut Creek, CA 94598
United States of America

Email: sales@sysmaster.com
Toll-Free: 1-877-900-3993
Tel: 1-510-420-8837
Web site: www.sysmaster.com

Notice to Recipient: All information contained herein and all referenced documents (the "Documents") are sent subject to the Terms of Service Agreement (the "Terms") found on SysMaster Corporation's ("SysMaster") website, <http://www.sysmaster.com> (the "Site"), which location and content of Terms may be amended from time to time, except that for purposes of this Notice, any reference to Content on the Site shall also incorporate and include the Documents. The Recipient is any person or entity who chooses to review the Documents. This document does not create any express or implied warranty by SysMaster, and all information included in the Documents is provided for informational purposes only and SysMaster provides no assurances or guarantees as to the accuracy of such information and shall not be liable for any errors or omissions contained in the Documents, beyond that provided for under the Terms. SysMaster's sole warranty is contained in the written product warranty for each product. The end-user documentation shipped with SysMaster products constitutes the sole specifications referred to in the product warranty. The Recipient is solely responsible for verifying the suitability of SysMaster's products for its own use. Specifications are subject to change without notice.