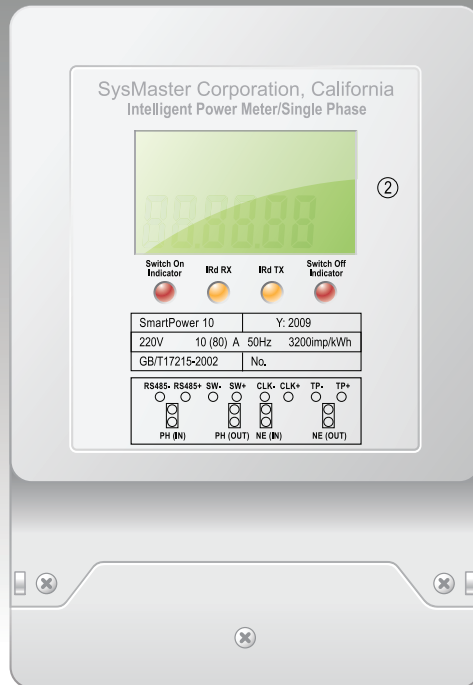


SmartPower 10

Electric Meter & Switch



FEATURES

- Accurate Real-Time Electric Power Monitoring
- Dynamic Electric Power Connect/Disconnect
- Data Exchange via RS485
- Low Power Consumption

Product Overview

SmartPower 10 is an intelligent device for monitoring and management of electric power consumption. The device is installed as a meter and has a built-in electrical switch. It collects real-time information about the power consumption of the connected electrical appliances and sends it to a central computer via RS485 cable link. VoiceMaster Power Management Server analyzes the data and if necessary instructs SmartPower 10 to turn on/off the connected electrical appliances. A server can manage over 1000 SmartPower 10 meters.

Accurate Real-Time Electric Power Monitoring

The SmartPower 10 meter continuously monitors the power parameters of the electric current that passes through it. The collected information is sent via RS485 to a remote VoiceMaster Power Management Server where the data is stored and processed. The device monitors KiloWatt power consumption to allow detailed energy efficiency analysis.

Data Exchange via RS485 Serial Link

The SmartPower 10 meter supports data exchange with the central VoiceMaster Power Management system via RS485 protocol. The device can transmit data at a distance up to 1500 m (4500 ft). The RS485 connectivity allows easy system scalability with up over 1000 SmartPower 10 devices managed by a single VoiceMaster Power Management server.

Dynamic Electric Power Connect/Disconnect

Upon receiving commands from the VoiceMaster Power Management server, the SmartPower 10 can connect or disconnect the attached electric appliances. The commands can be entered either manually by the administrator or automatically generated by the server to optimize the power consumption. The management can be time-based, tariff based, or power limit based. This feature allows a single central server to control a large number of SmartPower 10 meters and the corresponding attached appliances.

Low Power Consumption

The SmartPower 10 meter has a very low power footprint. Under normal operating conditions, the meter consumes less than 50mW of power.

Contact Info:

SysMaster
2700 Ygnacio Valley Rd, Suite 210
Walnut Creek, CA 94598
United States of America

email: info@sysmaster.com
web site: <http://www.sysmaster.com>